

CLIENT: Dr.Ganja

PRODUCT NAME: HTE Grape Do-Si-Dos - Raw Material Analysis

LOT: N/A

BATCH: J072225RA

MATRIX: Hemp Oil

REPORT CREATED: 07/28/2025

Analyte	LOD (%)	%	mg/g
CBC	0.030		
CBCA	0.030	1.595	15.950
CBCV	0.030		
CBD	0.030		
CBDA	0.030	0.373	3.733
CBDV	0.030		
CBDVA	0.030		
CBG	0.030		
CBGA	0.030	3.015	30.151
CBL	0.030		
CBLA	0.030		
CBN	0.030		
CBNA	0.030	0.146	1.460
CBT	0.030		
Δ^8 -THC	0.030		
Δ^9 -THC	0.030		
Δ^9 -THCA-A	0.030	57.725	577.254
Δ^9 -THCP	0.030		
Δ^9 -THCVA	0.030	0.404	4.035
9R-HHC	0.030		
9S-HHC	0.030		

55.478%

ACTIVE CANNABINOIDS



Total THC = THCa * 0.877 + Δ^9 -THC; Total THCV = THCVa * 0.877 + THCV; Total CBD = CBDa * 0.877 + CBD;
 Total CBG = CBGa * 0.877 + CBG; Total CBN = CBNa * 0.877 + CBN
 LOD = Limit of Detection; ND = Not Detected
 Total THC Measurement of Uncertainty: $\pm 1\%$
 Total CBD Measurement of Uncertainty: $\pm 1\%$



DATA COLLECTED BY Cannalyze.co

Reporting limits will vary based on sample extraction weight used for the analysis. The results of this report are based solely on the sample submitted and cannot be reproduced. Average values are used to determine the final values.

REPORT PREPARED FOR:

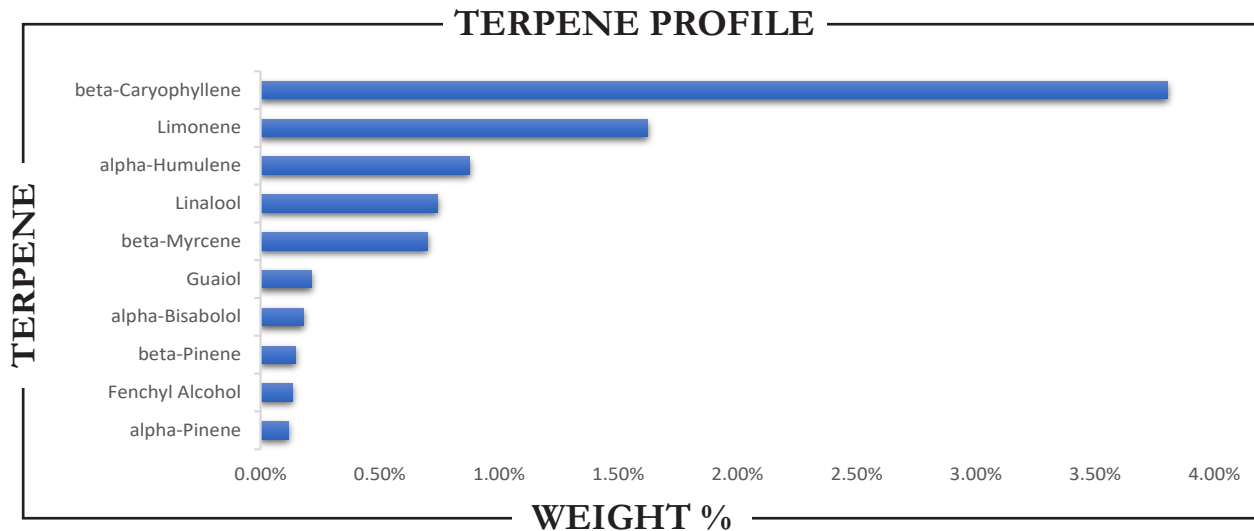
Dr. Ganja

PROJECT# 25014899
LAB ID 55037449
REPORT DATE 8/4/2025

SAMPLE NAME: J072225RA - HTE Grape Do-Si-Dos

DATE RECEIVED: 7/23/2025

TERPENES



TERPENE	WEIGHT %	TERPENE	WEIGHT %	TERPENE	WEIGHT %
alpha-Bisabolol	0.181	Caryophyllene oxide	ND	Limonene	1.624
alpha-Cedrene	ND	Cedrol	0.061	Linalool	0.742
alpha-Humulene	0.877	Eucalyptol	ND	Nerol	ND
alpha-Phellandrene	ND	Farnesene	ND	Nerolidol	0.073
alpha-Pinene	0.116	Fenchone	ND	Ocimene	0.059
alpha-Terpinene	ND	Fenchyl Alcohol	0.133	Pulegone	ND
beta-Caryophyllene	3.803	gamma-Terpinene	ND	Sabinene	ND
beta-Myrcene	0.701	Geraniol	ND	Sabinene hydrate	ND
beta-Pinene	0.145	Geranyl acetate	ND	Terpineol	ND
Borneol	ND	Guaiol	0.214	Terpinolene	0.022
Camphene	0.031	Hexahydrothymol	ND	Valencene	0.047
Camphor	ND	Isoborneol	ND		
3-Carene	ND	Isopulegol	ND		

Prepared By: RF Analyzed By: RF
 Prepared Date: 7/25/2025 Analyzed Date: 7/25/2025
 Analysis Batch: AUG2525A-TER
 Analyzed by method TP-TER-01 by HS-GCMS
 ND = Analyte not detected
 PPB = Parts per billion



APPROVED BY:
JUSTIN HALL
 LAB DIRECTOR

Justin Hall
 SIGNATURE

8/4/2025
 SIGNED ON