

CLIENT: Dr.Ganja

PRODUCT NAME: HTE Banana Cake - Raw Material Analysis

LOT: N/A

BATCH: J072225RB

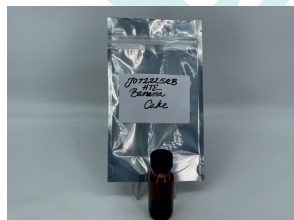
MATRIX: Hemp Oil

REPORT CREATED: 07/28/2025

Analyte	LOD (%)	%	mg/g
CBC	0.030		
CBCA	0.030	1.314	13.136
CBCV	0.030		
CBD	0.030		
CBDA	0.030	0.261	2.611
CBDV	0.030		
CBDVA	0.030		
CBG	0.030		
CBGA	0.030	4.317	43.172
CBL	0.030		
CBLA	0.030		
CBN	0.030		
CBNA	0.030	0.228	2.281
CBT	0.030		
$\Delta 8$ -THC	0.030		
$\Delta 9$ -THC	0.030		
$\Delta 9$ -THCA-A	0.030	66.750	667.504
$\Delta 9$ -THCP	0.030		
$\Delta 9$ -THCVA	0.030	0.377	3.774
9R-HHC	0.030		
9S-HHC	0.030		

64.238%

ACTIVE CANNABINOIDS



Total THC = THCa * 0.877 + $\Delta 9$ -THC; Total THCV = THCVa * 0.877 + THCV; Total CBD = CBDa * 0.877 + CBD;
 Total CBG = CBGa * 0.877 + CBG; Total CBN = CBNa * 0.877 + CBN
 LOD = Limit of Detection; ND = Not Detected
 Total THC Measurement of Uncertainty: $\pm 1\%$
 Total CBD Measurement of Uncertainty: $\pm 1\%$



DATA COLLECTED BY Cannalyze.co

Reporting limits will vary based on sample extraction weight used for the analysis. The results of this report are based solely on the sample submitted and cannot be reproduced. Average values are used to determine the final values.

REPORT PREPARED FOR:

Dr. Ganja

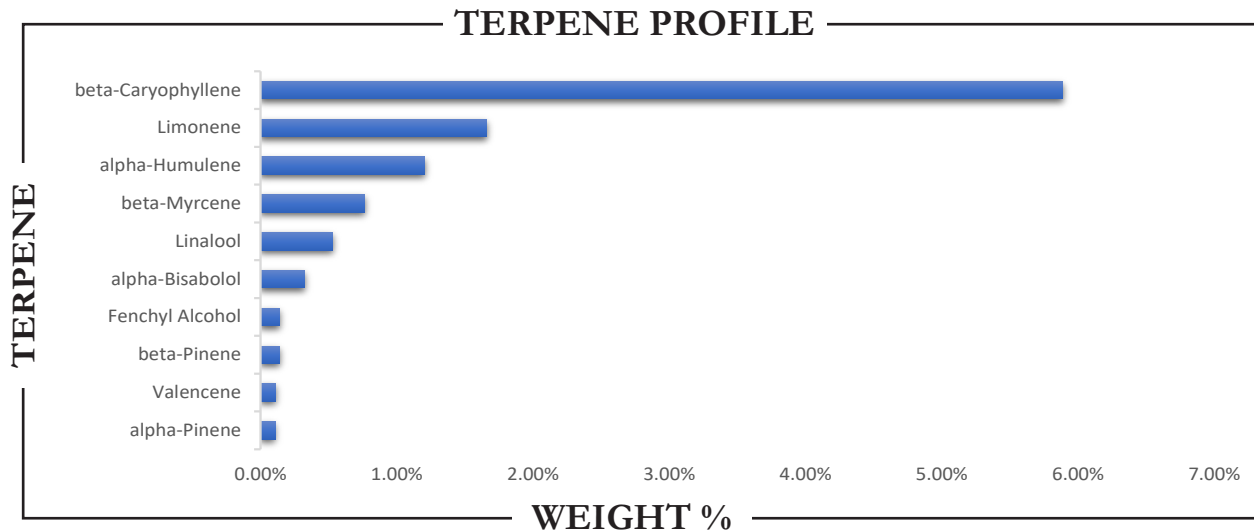
PROJECT# 25014899
 LAB ID 55037450
 REPORT DATE 8/4/2025



SAMPLE NAME: J072225RB - HTE Banana Cake

DATE RECEIVED: 7/23/2025

TERPENES



TERPENE	WEIGHT %	TERPENE	WEIGHT %	TERPENE	WEIGHT %
alpha-Bisabolol	0.324	Caryophyllene oxide	ND	Limonene	1.655
alpha-Cedrene	ND	Cedrol	0.045	Linalool	0.528
alpha-Humulene	1.205	Eucalyptol	ND	Nerol	ND
alpha-Phellandrene	ND	Farnesene	ND	Nerolidol	0.046
alpha-Pinene	0.105	Fenchone	ND	Ocimene	0.022
alpha-Terpinene	ND	Fenchyl Alcohol	0.141	Pulegone	ND
beta-Caryophyllene	5.889	gamma-Terpinene	ND	Sabinene	ND
beta-Myrcene	0.761	Geraniol	ND	Sabinene hydrate	ND
beta-Pinene	0.140	Geranyl acetate	ND	Terpineol	ND
Borneol	ND	Guaiaol	ND	Terpinolene	0.023
Camphene	0.030	Hexahydrothymol	ND	Valencene	0.111
Camphor	ND	Isoborneol	ND		
3-Carene	ND	Isopulegol	ND		

Prepared By: RF Analyzed By: RF
 Prepared Date: 7/25/2025 Analyzed Date: 7/25/2025
 Analysis Batch: AUG2525A-TER
 Analyzed by method TP-TER-01 by HS-GCMS
 ND = Analyte not detected
 PPB = Parts per billion



APPROVED BY:
JUSTIN HALL
 LAB DIRECTOR

Justin Hall
 SIGNATURE

8/4/2025
 SIGNED ON