

CLIENT: Dr.Ganja

PRODUCT NAME: HTE White Fire OG - Raw Material Analysis

LOT: N/A

BATCH: J072225RC

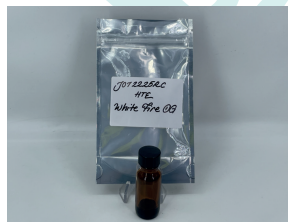
MATRIX: Hemp Oil

REPORT CREATED: 07/28/2025

Analyte	LOD (%)	%	mg/g
CBC	0.030		
CBCA	0.030	2.184	21.843
CBCV	0.030		
CBD	0.030		
CBDA	0.030	0.387	3.865
CBDV	0.030		
CBDVA	0.030		
CBG	0.030		
CBGA	0.030	5.202	52.016
CBL	0.030		
CBLA	0.030		
CBN	0.030		
CBNA	0.030	0.168	1.676
CBT	0.030		
Δ8-THC	0.030		
Δ9-THC	0.030		
Δ9-THCA-A	0.030	63.865	638.645
Δ9-THCP	0.030		
Δ9-THCVA	0.030	0.486	4.857
9R-HHC	0.030		
9S-HHC	0.030		

**63.399%**

**ACTIVE CANNABINOIDS**



Total THC = THCa \* 0.877 + Δ9-THC; Total THCV = THCVa \* 0.877 + THCV; Total CBD = CBDa \* 0.877 + CBD;  
 Total CBG = CBGa \* 0.877 + CBG; Total CBN = CBNa \* 0.877 + CBN  
 LOD = Limit of Detection; ND = Not Detected  
 Total THC Measurement of Uncertainty: ± 1%  
 Total CBD Measurement of Uncertainty: ± 1%



DATA COLLECTED BY Cannalyze.co

Reporting limits will vary based on sample extraction weight used for the analysis. The results of this report are based solely on the sample submitted and cannot be reproduced. Average values are used to determine the final values.

## REPORT PREPARED FOR:

Dr. Ganja

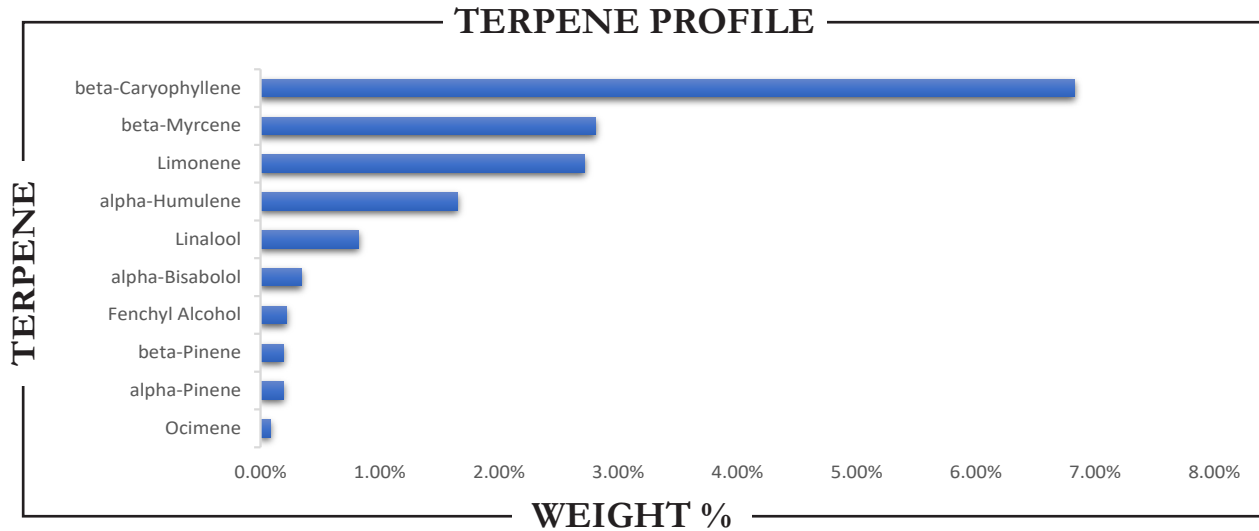
PROJECT# 25014899  
 LAB ID 55037451  
 REPORT DATE 8/4/2025



SAMPLE NAME: J072225RC - HTE White Fire OG

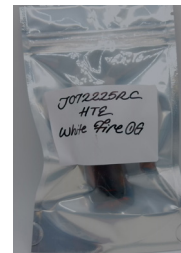
DATE RECEIVED: 7/23/2025

## TERPENES



TERPENE	WEIGHT %	TERPENE	WEIGHT %	TERPENE	WEIGHT %
alpha-Bisabolol	0.344	Caryophyllene oxide	ND	Limonene	2.719
alpha-Cedrene	ND	Cedrol	0.044	Linalool	0.818
alpha-Humulene	1.654	Eucalyptol	ND	Nerol	ND
alpha-Phellandrene	ND	Farnesene	ND	Nerolidol	0.045
alpha-Pinene	0.190	Fenchone	0.029	Ocimene	0.085
alpha-Terpinene	ND	Fenchyl Alcohol	0.222	Pulegone	ND
beta-Caryophyllene	6.829	gamma-Terpinene	ND	Sabinene	ND
beta-Myrcene	2.806	Geraniol	ND	Sabinene hydrate	ND
beta-Pinene	0.192	Geranyl acetate	ND	Terpineol	ND
Borneol	ND	Guaial	ND	Terpinolene	0.035
Camphene	0.048	Hexahydrothymol	ND	Valencene	ND
Camphor	ND	Isoborneol	ND		
3-Carene	ND	Isopulegol	ND		

Prepared By: RF Analyzed By: RF  
 Prepared Date: 7/25/2025 Analyzed Date: 7/25/2025  
 Analysis Batch: AUG2525A-TER  
 Analyzed by method TP-TER-01 by HS-GCMS  
 ND = Analyte not detected  
 PPB = Parts per billion



APPROVED BY:  
**JUSTIN HALL**  
 LAB DIRECTOR

*Justin Hall*  
 SIGNATURE

8/4/2025  
 SIGNED ON